

Create Communication-Effective Graphs in SAS® V9.3 Without SAS/GRAPH®

Le_Roy_Bessler@wi.rr.com

Bessler Consulting and Research

Converting Complexity To Clarity™

Notice

SAS is a registered trademark or trademark of SAS Institute Inc. in the USA and other countries. ® indicates USA registration. Other product and brand names are trademarks or registered trademarks of their respective owners.

Converting Complexity To Clarity
is a trademark of LeRoy Bessler PhD.

Put it before them

- **briefly** . . .
so they will read it
- **clearly** . . .
so they will understand it
- **picturesquely** . . .
so they will remember it
- and, above, all **accurately** . . .
so they will be guided by its light

—*Joseph Pulitzer*

**For another reason
to always create a graph of your data
(i.e., to get “picturesque”),
on the Proceedings & Tools CD,
please see Phil Holland’s article
“Anscombe’s Quartet”**

**OK, I agree with Pulitzer about
brevity, but my slides are verbose**

- If you have poor hearing (like me),

verbose text slides can help

- It is easier to understand written text
than spoken text, in any language

- **If verbose slides irritate or bore you,
only listen to me, unless I show a graph**

- **My verbose slides are still communicative
AFTER the presentation, or if you missed it.**

I Recommend

- Good Survey Introduction to SG procedures:
“Statistical Graphics Procedures by Example:
Effective Graphics* Using SAS”
by Sanjay Matange & Dan Heath (work for SAS)
 - Compact Fold-Up Tip Sheets:
 - SGPLOT Procedure
 - ODS Graphics
- *but I have a different idea of what constitutes
“Effective Graphics”**

Scope

- Management Reporting
- Presentation Graphics
- Not Analytical or Statistical Graphs

Chart Types

- **Pie Chart**
- **Bar Charts**
- **Time Series Plots**

Graphic Tool Evaluation Criteria

- **Communication Effectiveness**
- **Reliability**
- **Ease of Use**

Needs & Tools for Mgt Rpting or Presentation Slides

- Comparison PLUS Shares – pie charts
- Comparison – bar charts*
- Tracking Over Time – plots

*bar charts can also do

Comparison PLUS Shares

and are only recourse

if too many shares for viable pie chart

Pie Chart

- Please see the paper for these slides
- Other slide presentation will cover
- Best done with that macro

SAS Graphs Without SAS/GRAPH

New tools

- SG procedures
- ODS GRAPHICS statement
- Graph Style support
- Graph Template Language —
a tool of last resort

Principia Graphika

Bessler's **Communication-Effective**
Graphic & Web Design Principles

➤ For Today: A Very Short List

How Do New Tools

- deliver image PLUS precise numbers?
- support ordering of image elements?
- permit clutter removal?
- provide USABLE legend?

How Do New Tools

➤ permit clutter removal?

Why should you care about clutter?

The Power to Show™
The Power of Simplicity™

Complexity
Distorts, Impedes, Delays
Communication

Simplicity

- Powerful

- Elegant

Elegant

- everything needed
- only the needed

**sparse image
focuses attention**

sparse graph
more easily
and
more quickly
interpreted

Exclude Graphic Frills

- Most graphic frills come from the time when graph paper and pen and ink were used to plot laboratory results in a time before most of you were born

Clutter that I remove

- axis labels that can be in title or subtitle
- axis lines
- tick marks for tick values,
especially if using grid lines
- frame around graph detail area
(which is not Border around entire graph)

Clutter Removal - SG Procedures

- `yaxis display=(nolabel) ; /* no axis label */`
- `yaxis display=(noline) ; /* no axis line */`
- `yaxis display=(noticks) ; /* no tick marks */`

Above also apply to `xaxis`, `rowaxis`, and `colaxis`.

- `hbar . . . / . . . nooutline ; /* no bar outline */`

Above also applies `vbar`.

- Removing frame of graph detail area
requires use of a customized style

Removal frame of graph detail area requires use of a customized style

```
proc template;  
  define style styles.YourStyleName;  
    parent=styles.SomePreExistingStyle;  
    class graphwalls / frameborder=off;  
  end;  
run;
```

The pre-existing style can be

- from SAS (e.g., HTMLblue or listing)
- previously customized by user or site

ODS Styles

- applied to formatted ODS destinations based on defaults
- default styles for each destination
 - HTML – Styles.Default (formerly)
 - HTML – Styles.HTMLblue (V9.3)
 - RTF – Styles.Rtf
 - PDF – Styles.Printer
 - LISTING – Styles.Listing (NEW)

For SAS OnlineDoc about Styles

TEMPLATE Procedure: Creating a Style Template

<http://support.sas.com/documentation/cdl/en/odsug/62755/HTML/default/viewer.htm#p1t0ip5z3ouo89n1qbsztf3khjqr.htm>

Understanding Styles

<http://support.sas.com/documentation/cdl/en/grstatproc/64778/HTML/default/viewer.htm#n0ivwopmy7qj82n10dcq109zibj3.htm>

Creating Graph on Disk with **no** HTML, PDF, or RTF wrapper

- ODS GRAPHICS / SG procedures

ODS LISTING GPATH="FolderName"

STYLE=Styles.WhatYouLike;

ODS GRAPHICS ON / . . .

IMAGENAME="FileName";

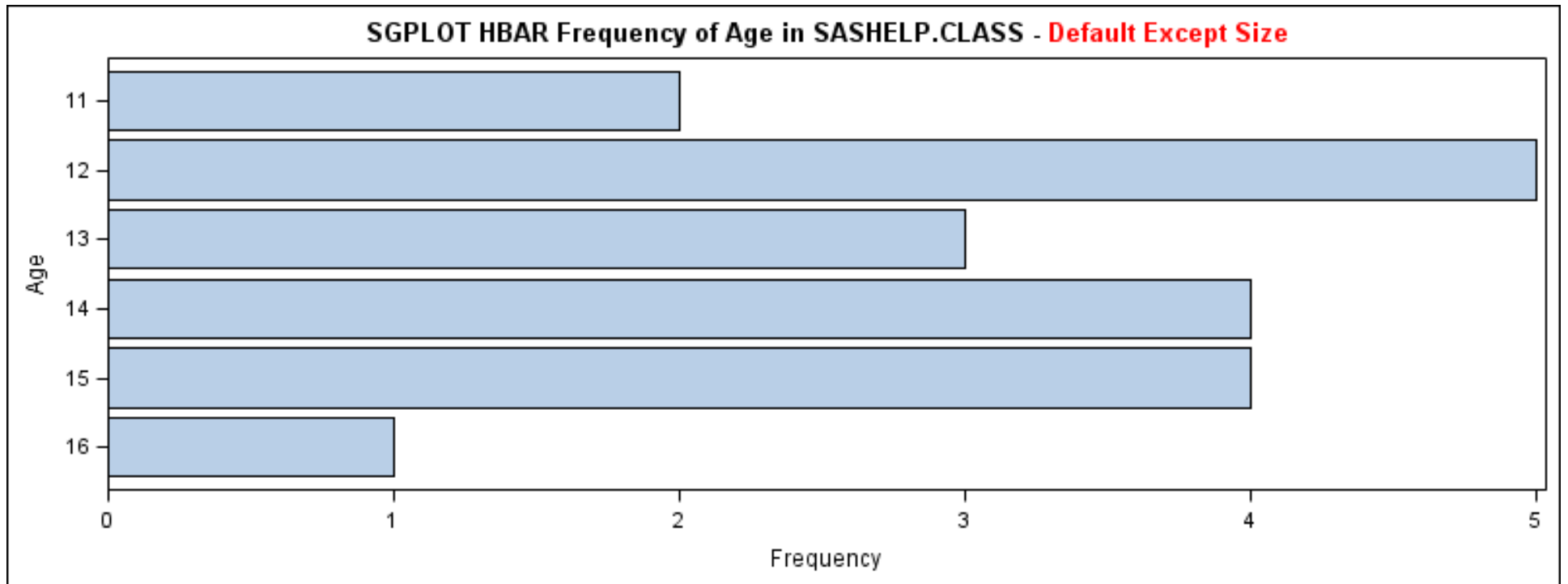
- You can omit **STYLE=** and take default

Creating Graph on Disk

Taking Defaults, Except Size

- Horizontal Bar Chart
- PROC SGPLOT

OK, but could be better



```
/* Default HBAR Chart */
```

```
ods listing gpath="Folder";
```

```
ods graphics on / reset=all height=300px width=800px
```

```
    imagename='SGPLOT hbarFreqChart_SAS_Default';
```

```
title "SGPLOT HBAR Frequency of Age in SASHELP.CLASS - "
```

```
    color=red "Default Except Size";
```

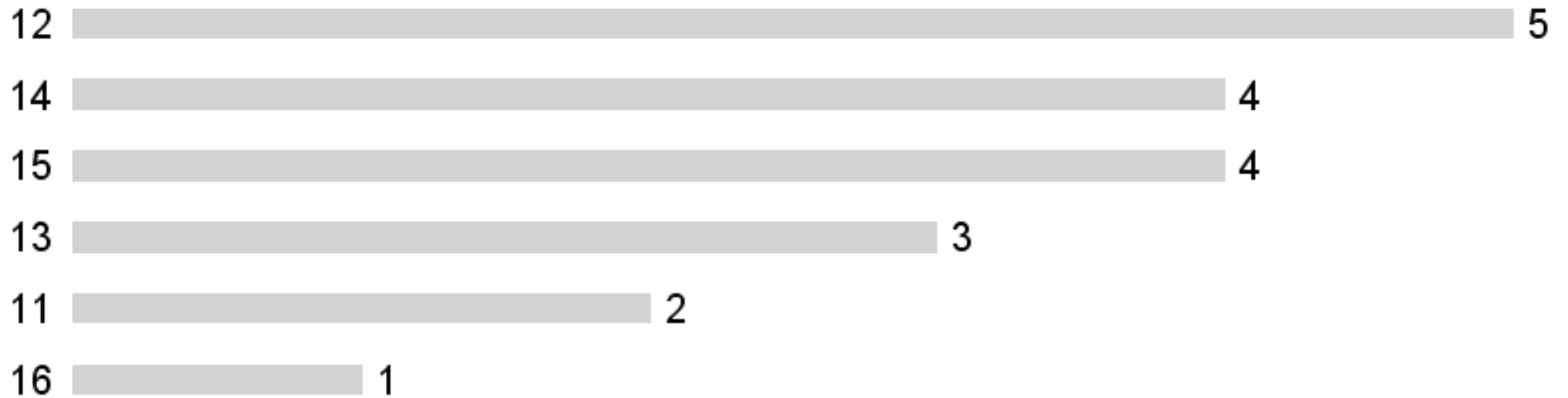
```
proc sgplot data=sashelp.class;
```

```
hbar Age / stat=freq;
```

```
run;
```


All Clutter Removed

SGPLOT HBAR Frequency of Age in SASHELP.CLASS - Customized
Simplified and Ordered, But No Way To Get Extra Stats



```
/* Clutter Removers are in red */
```

```
ods listing gpath="Folder"  
    style=styles.MinimalWithNoFrame;  
ods graphics on / . . . ;  
title1 . . . ; title2 . . . ;  
proc sgplot data=sashelp.class;  
yaxis display=(nolabel noline noticks)  
    valueattrs=(size=16pt);  
xaxis display=none;  
hbar Age / stat=freq categoryorder=respdesc  
    datalabel datalabelattrs=(size=16pt) barwidth=0.4  
    nooutline ;  
run;
```

```
/* Order the image elements by significance
```

```
Provide precise numbers
```

```
Other customization */
```

```
hbar Age / stat=freq
```

```
categoryorder=respdesc /* by descending bar length */
```

```
datalabel /* value at end of bar */
```

```
datalabelattrs=(size=16pt) /* size of that value label */
```

```
barwidth=0.4 /* self-explanatory */
```

```
nooutline ;
```

How Do New Tools

➤ support ordering of image elements?

➤ deliver image PLUS precise numbers

WITHOUT unwanted and should-be

unnecessary use of GRAPH TEMPLATE

LANGUAGE or ANNOTATE?

Why order the image elements?

- Show them what's important
with Ranking

Why Image PLUS Numbers?

Quick **AND** Reliable Inference

Communication-Effective Graphs

➤ Graphs for Decision Support

image → easy, quick decision / inference

numbers → reliable decision / inference

➤ Communication Effectiveness

clear simple visual

legible text & numbers

Power & Challenge

- Graph + Precise Numbers =
Quick Correct Conclusion
- How deliver both graph & precise numbers
at the same time?

Graph & Precise Numbers Same Time

- Horizontal Bar Chart – easiest & reliable
- Vertical Bar Chart – if few enough bars

```
/* Order the image elements by significance
```

```
Provide precise numbers
```

```
Other customization */
```

```
hbar Age / stat=freq
```

```
categoryorder=respdesc /* by descending bar length */
```

```
datalabel /* value at end of bar */
```

```
datalabelattrs=(size=16pt) /* size of that value label */
```

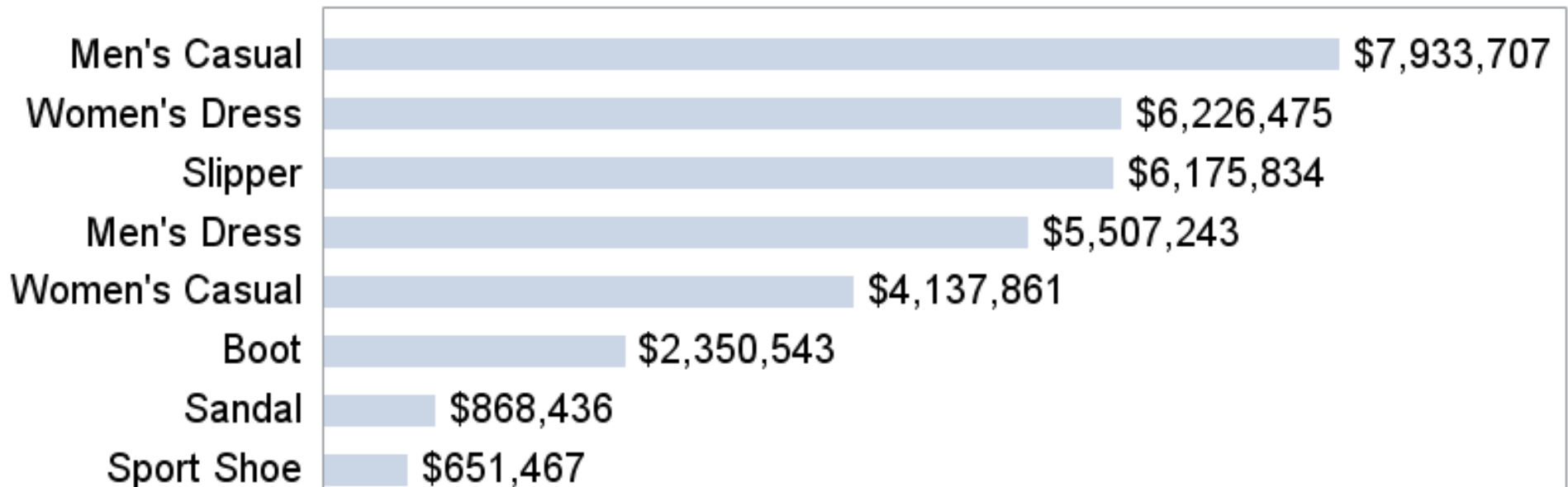
```
barwidth=0.4 /* self-explanatory */
```

```
nooutline ;
```

New Bar Chart of Sums

(I did not bother using customized ODS style to remove the frame)

SGPLOT Sales By Product in SASHELP.SHOES - No Percent, Unneeded Frame



**Better New Solution
requires preprocessing the data**

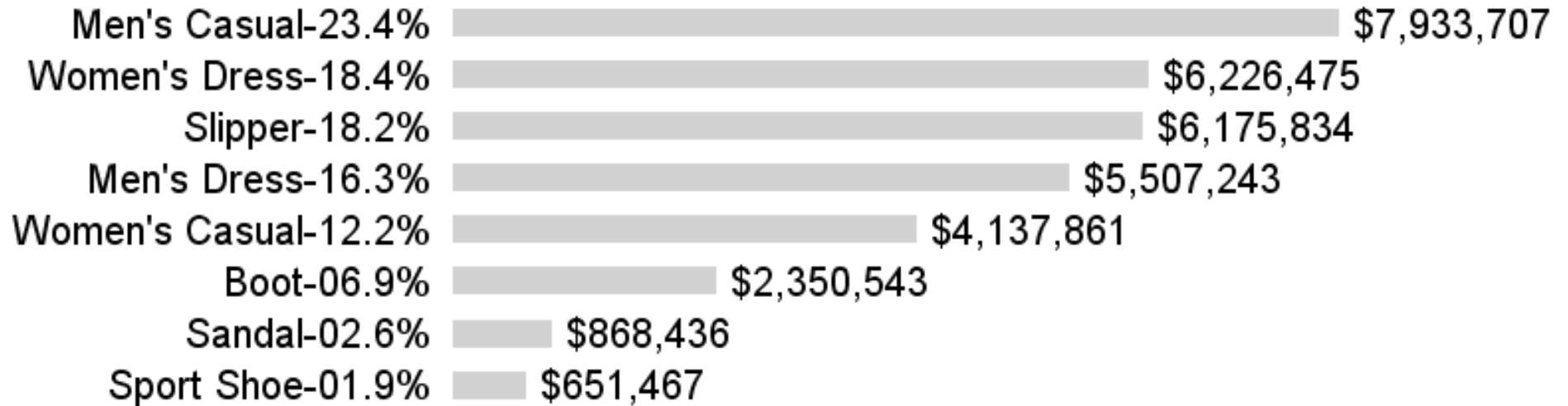
Code for Bar Chart of Sums With Percent Shares of Total*

- Code to do it the hard way: in this paper
- Code to do it easily and safely:
see the macros paper, for
 - macro invocation code
 - macro source code

*This chart is an alternative
when pie chart is infeasible or unwanted

Result From Macro

Horizontal Bar Chart of Ranked Totals and Percent Shares Using
HBARsummaryChartWithPctShares Macro



How Do New Tools

- provide USABLE legend?

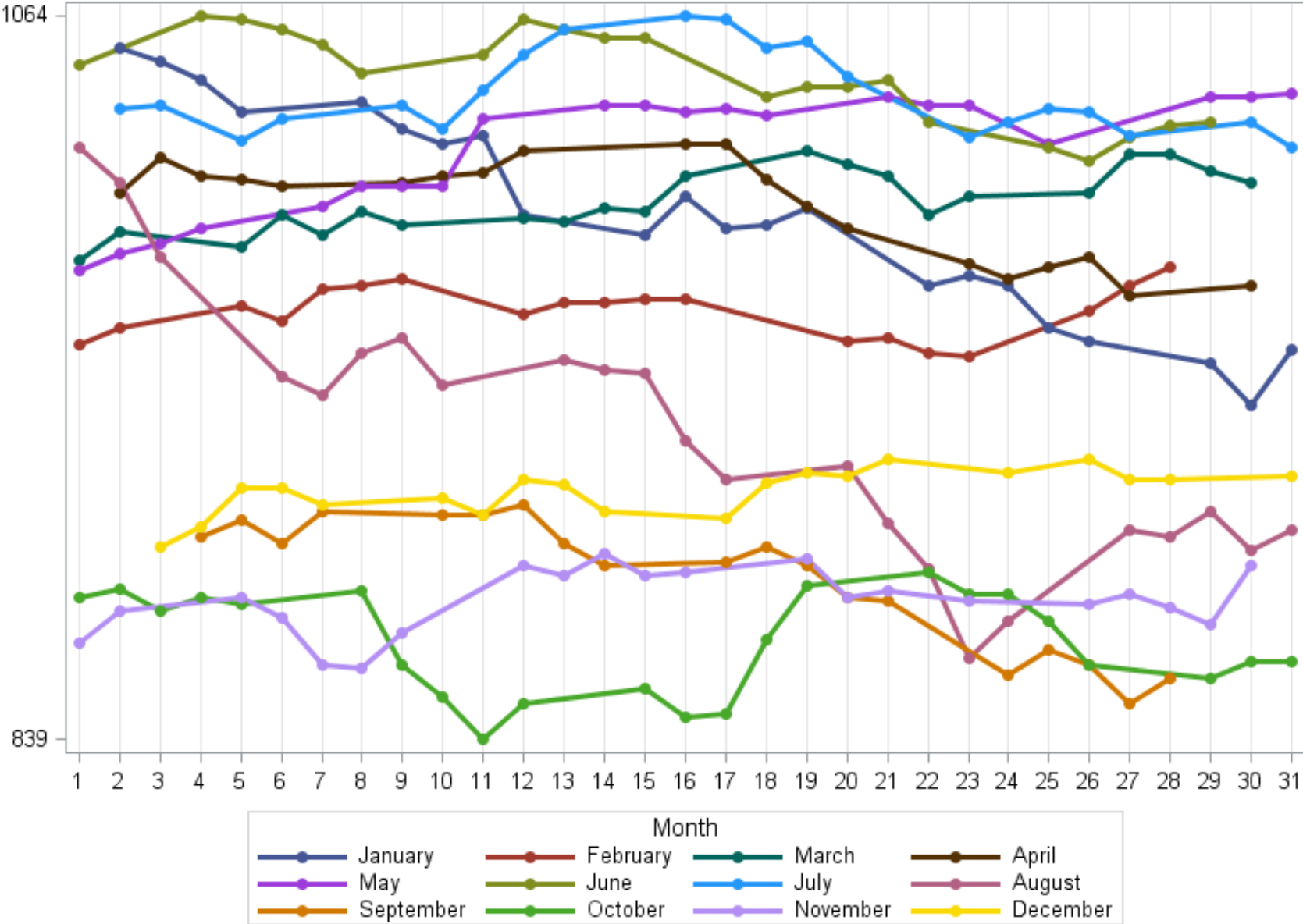
How Do New Tools

provide **USABLE** legend?

➤ What graph needs a legend?

Needs a Legend & It Is Usable

800px BY 600px SERIES Plot: Dow by Day In 1990 With Monthly Plots Overlay



Legend Usability

- Plot markers themselves must be big
- Plot lines themselves must be thick

Color

- big enough markers
- thick enough lines
- if text, thick text

For more about **Color**, see the paper
“Communication-Effective Use of Color
for Web Pages, Graphs, Tables, Maps,
Text, and Print”

The link is in the handout

What is an UnUsable Legend?

- Traditionally, Excel chart legends
- Now, also
the SAS SG procedure legends

What is an UnUsable Legend?

- Will discuss later if time available

Time Plots

All examples in paper are web-enabled

Web-Enabled

- ALT text (a.k.a. “data tip”)
- link to spreadsheet of the data
 - detail lookup for correct inference
 - postprocessing with Excel, if desired

Code Used For All Time Plots

ods graphics on /

`reset=all` /* Suppress any leftovers from prior code runs */

`border=off` /* Not usually desired on a web page

but turn on if wanting to see how much extra space
might be available in the browser window
for a wider image */

`antialiasmax=2500` /* antialiasing is on by default,

but antialiasmax is defaulted to 600.

If that is insufficient,

then antialiasing will be incomplete */

...;

Code Used For All Time Plots

```
ods graphics on /
```

```
...
```

```
tipmax=2500 /* This is the maximum number of distinct
```

```
mouse-over areas allowed
```

```
before data tips are disabled. Default is 400. */
```

```
imagemap=on /* This turns on the data tips.
```

```
SAS/GRAPH allows customization of the data tips,
```

```
but ODS GRAPHICS does not. */
```

```
imagenname=' DesiredFileNameForThePNGimageFile'
```

```
;
```

Code Used For All Time Plots

```
yaxis display=(nolabel) /* I identify axis vars in the plot title */  
  values=(&Ymin_1990 &Ymax_1990); /* I choose to show  
    only the yaxis minimum and maximum, available as  
    symbolic (or macro) vars from setup processing. */  
xaxis display=(nolabel) /* I identify axis vars in the plot title */  
  grid /* provide reference lines for each xaxis value */  
  . . . /* here specify list with values= or use interval= */
```

Example of Sizing Parameters

ods graphics on / . . .

```
width=800px /* width of image in pixels, default is 640 */  
height=600px /* height of image in pixels, default is 480 */  
;
```

Typical (but not All) Parameters Used on SERIES Statement Here

```
series y=YourYAXISvar x=YourXAXISvar /
```

```
markers          /* turns on plot-point markers
```

```
                  default is nomarkers */
```

```
markerattrs=(size=7
```

```
              symbol=circlefilled
```

```
              color=red /* But DO NOT specify a color
```

```
                  if using GROUP= on the SERIES statement
```

```
                  to produce a multi-line overlay */
```

```
)
```

```
...;
```

Typical (but not All) Parameters Used on SERIES Statement Here

`series y=YourYAXISvar x=YourXAXISvar / . . .`

`lineattrs=(thickness=N /* where, in this paper, N is 2 or 3.`

`3 is used when chart has multiple lines`

`(as in the twelve months of 1990 overlaid)`

`so that line colors are more easily distinguished */`

`pattern=solid /* If you omit your pattern preference, the
software might make decision, which you might not like. */`

`color=blue /* But DO NOT specify a color if using GROUP=
on the SERIES statement to produce a multi-line overlay */`

`);`

Special XAXIS Parameters

For Date, Time, or DateTime Variables:

Interval= can have numerous different values.

Used here will be MONTH, SEMIMONTH, and WEEK.

FitPolicy= default is THIN. If you don't like thinning (value omission), options (besides increasing image width) are:

specify **FitPolicy=Stagger**

specify **FitPolicy=StaggerRotate** (first try Stagger,
if no help, use Rotate)

specify **FitPolicy=RotateStagger** (first try Rotate,
if no help, use Stagger)

specify **FitPolicy=Rotate** (least desirable)

YAXIS Value Thinning

- If yaxis thinning is undesired,
only option is increase height of image
- If yaxis variable has discrete character values, thinning is absolutely unacceptable
- **Astonishingly, xaxis or yaxis thinning by SAS does NOT produce any messages in SAS log**

New Tech Handling of Axis Values

- For ME
 - Unexpected
 - Unfriendly for ad hoc
 - Unacceptable for production
- Automatic “thinning” can happen even when specific expectations coded
- NO message in SAS log

New Tech Thinning of Axis Values

- Automatic “thinning” can happen even when specific expectations coded
- NO message in SAS log

Context:

- Two ways to specify axis values
- **value** = (your list here)
- for date, time, datetime variables
interval =
day, week, semimonth, month, etc.

New Tech Thinning of Axis Values

- Automatic “thinning” can happen even when specific expectations coded
- NO message in SAS log
- for **interval** = day, week, month, etc., graph viewer probably can guess and “interpolate” the missing values
- probably also for continuous numerics

New Tech Thinning of Axis Values

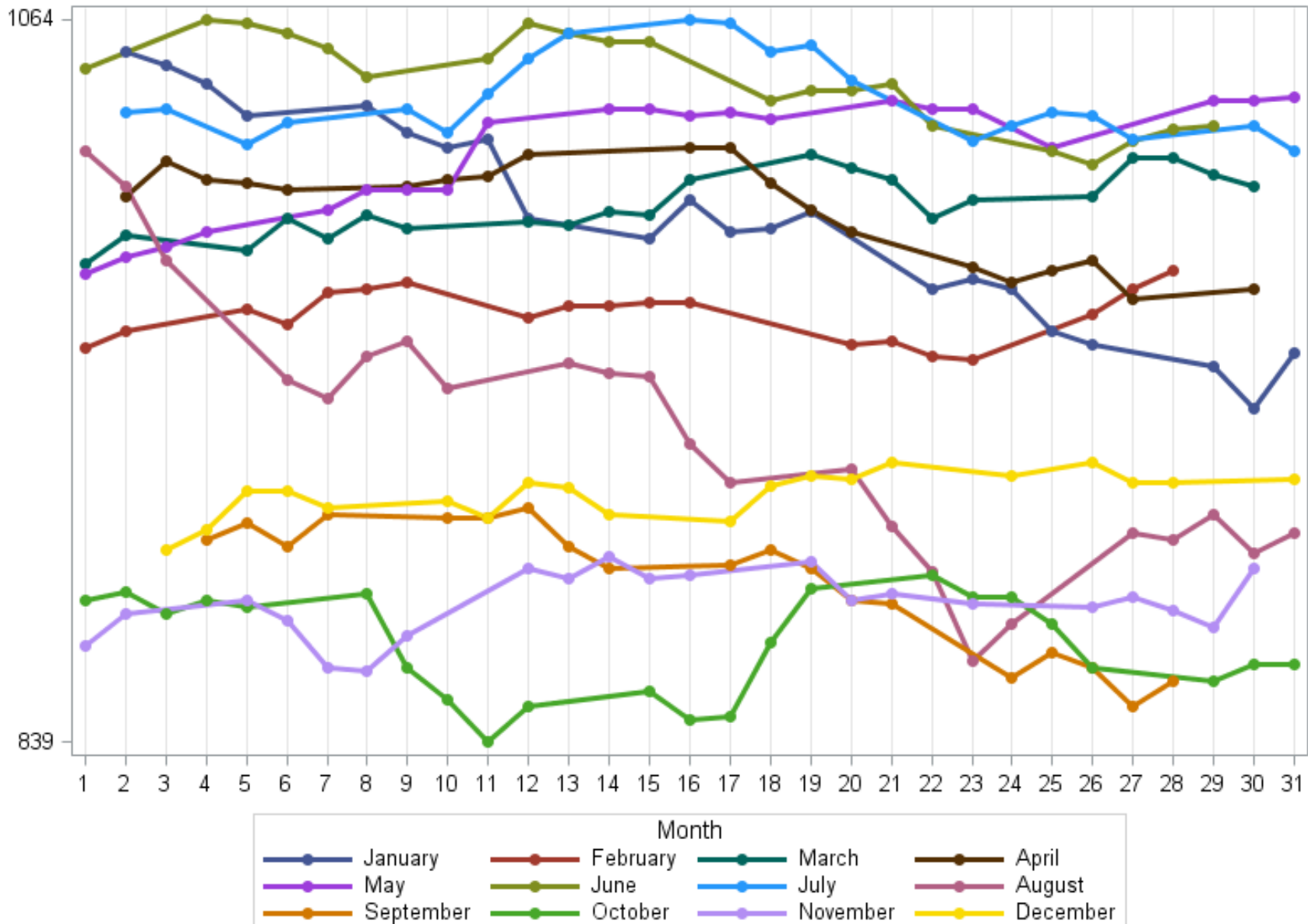
- Automatic “thinning” can happen even when specific expectations coded
- NO message in SAS log
- for bar charts, pie charts, or any chart with discrete character axis values, missing values CANNOT be guessed

Options To Try To UnDo Thinning

- Increase image height or width, depending on which axis affected
- Try other FitPolicy (7 choices)
- THIN is default
(THIN is ONLY option for vertical axis, besides increasing height of image)
- STAGGER, STAGGERTHIN
- ROTATE, ROTATETHIN
- STAGGERROTATE, ROTATESTAGGER

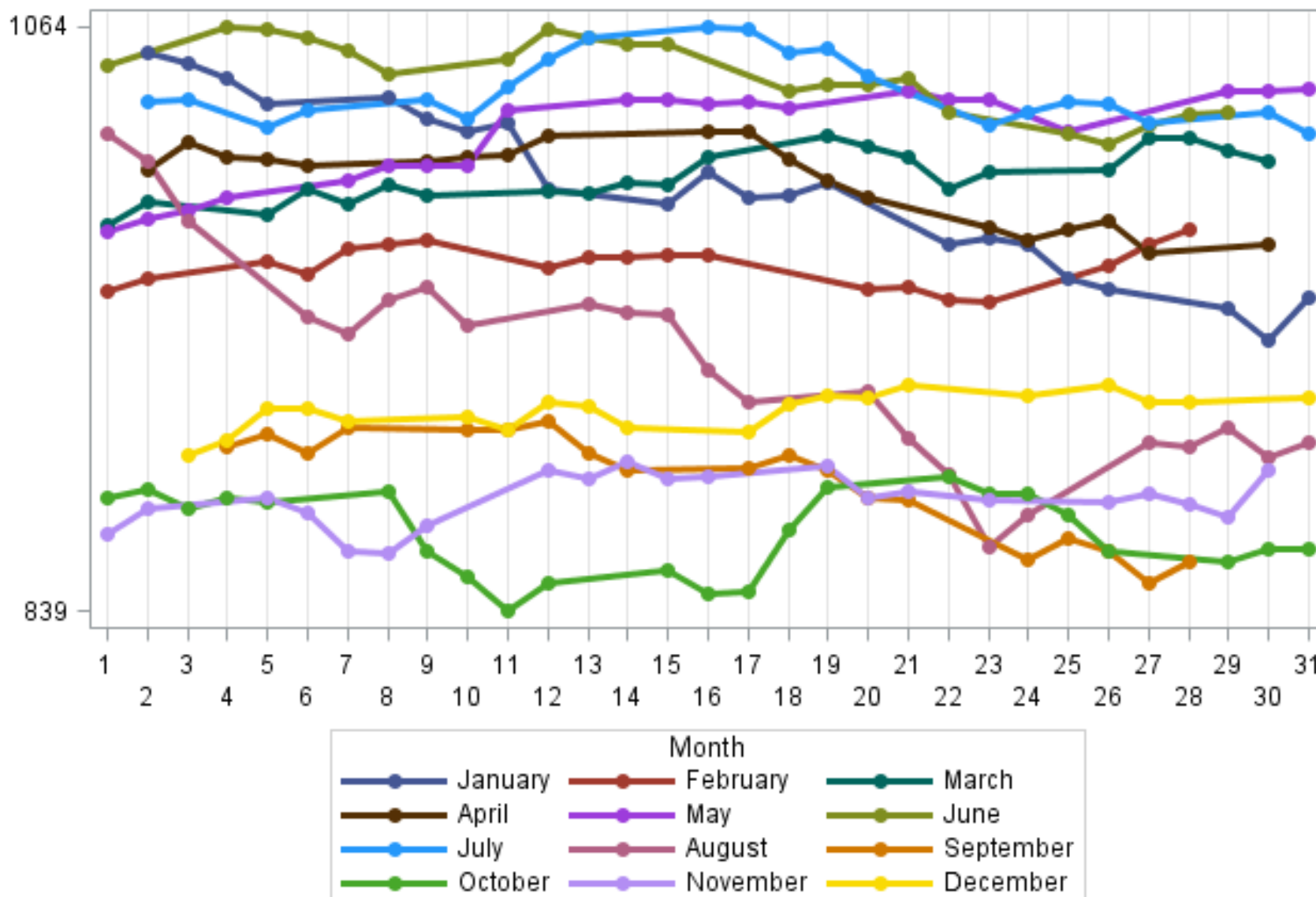
Increased width of image

800px BY 600px SERIES Plot: Dow by Day In 1990 With Monthly Plots Overlay



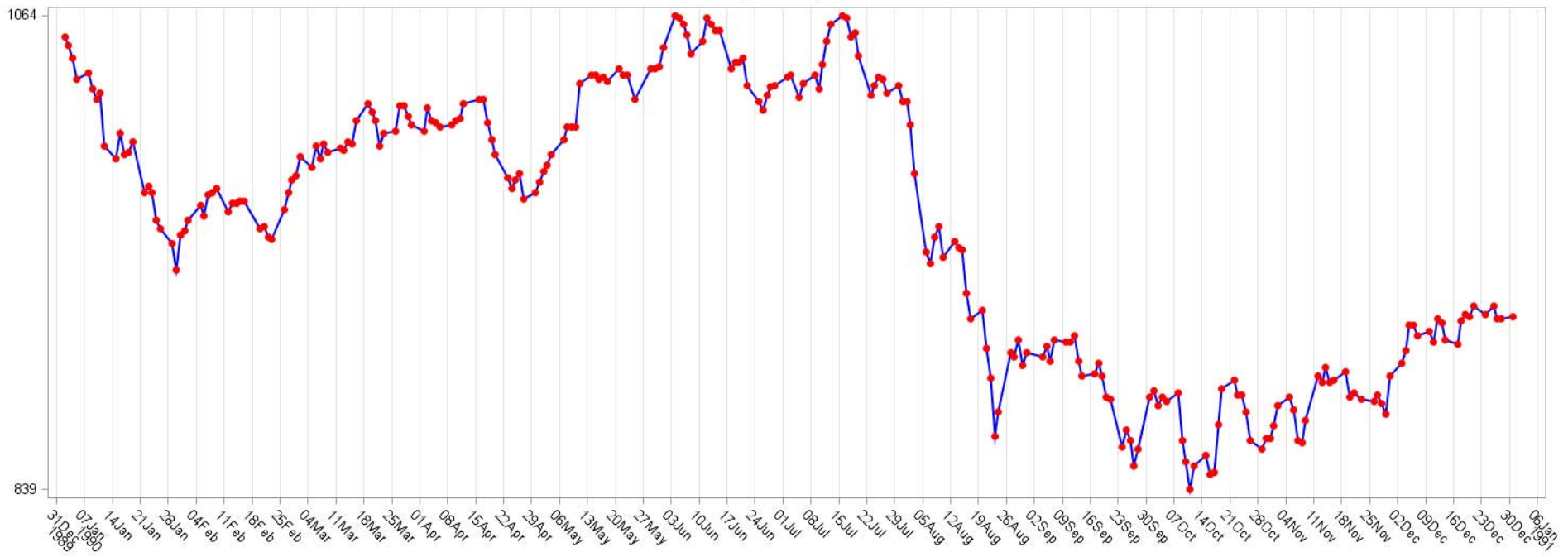
Could Fit **WITHOUT** Stagger

Default Size SERIES Plot: Dow by Day In 1990 With Monthly Plots Overlay
Using FitPolicy=stagger

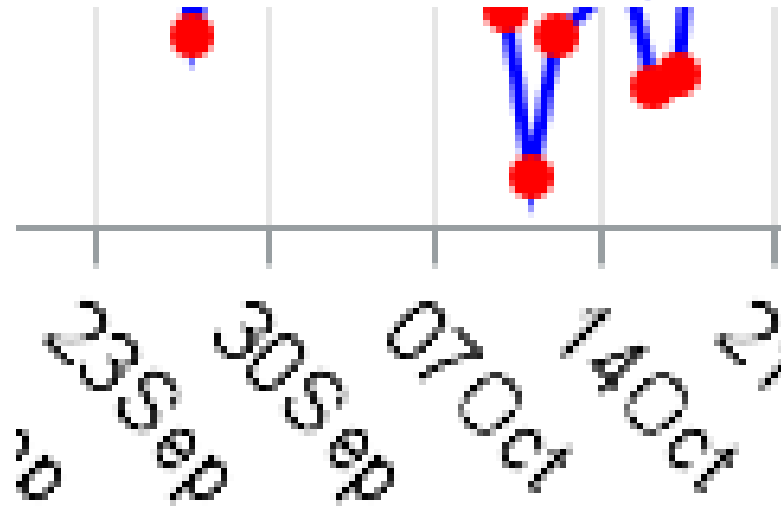


FitPolicy=Rotate for Weekly Plot

1500px BY 600px SERIES Plot with Grid Interval=Week: Dow by Day in 1990
Using FitPolicy=Rotate



Rotate is a 45-Degree Tilt



**The Best Way
to present a
Time Series Graph**

The viewer of a line plot **CANNOT**
reliably determine precise numbers
by comparing point to axis values.

The Most Communication-Effective and Most Usable Information Delivery

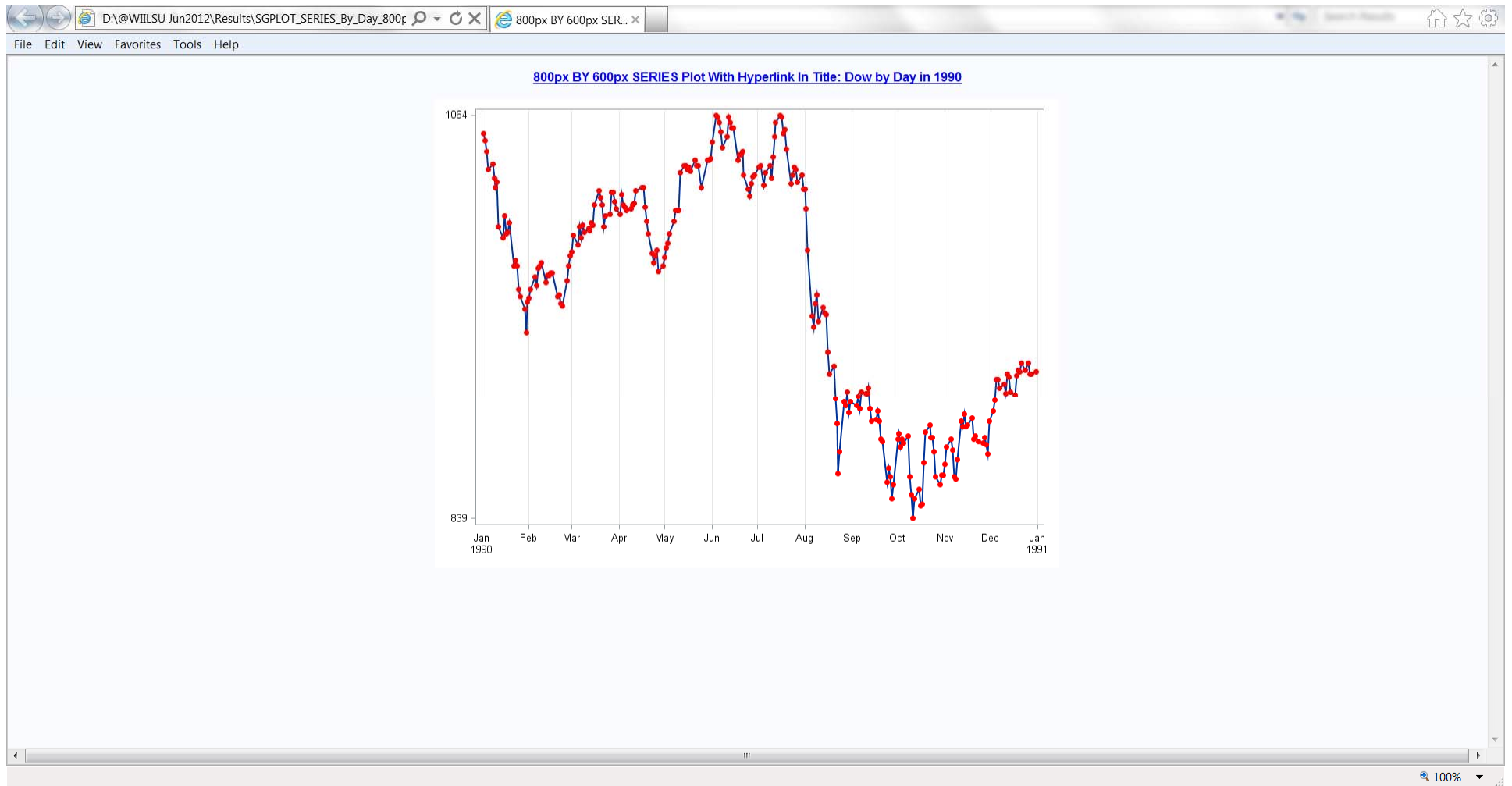
Visual + Detail = Effective Communication: Web-Enabled Graph + Spreadsheet

- Rest mouse on any plot point for ALT text
- Use hyperlink to get to ALL data values

Web-Enabled Graph (1920 X 1080 screen not well used)



ODS HTML NOGTITLE hyperlink NOT on image area



Resting the mouse to see the ALT text (“data tip”)



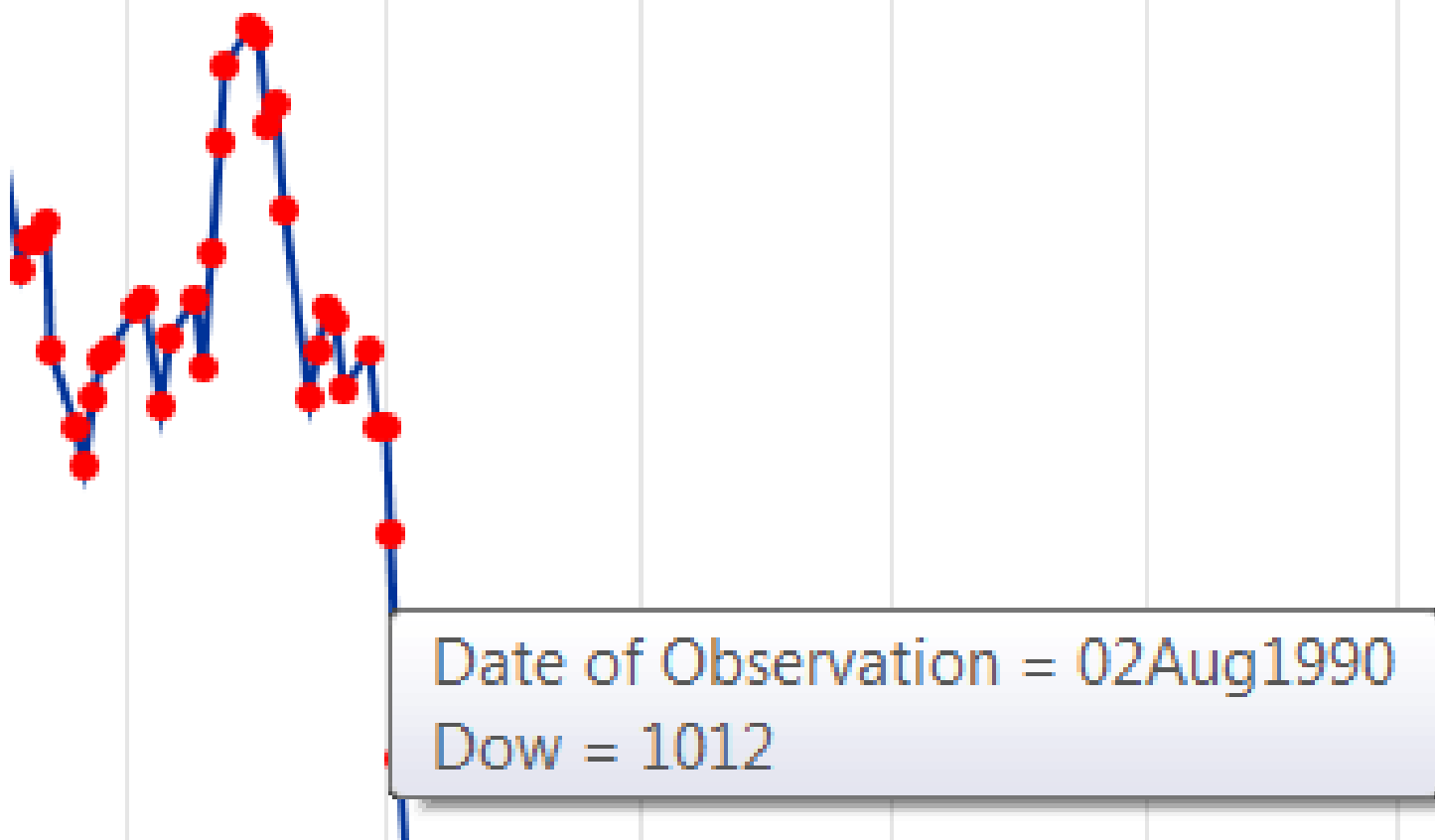
Zooming to better see the ALT text (“data tip”)



Date of Observation = 02Aug1990
Dow = 1012

Zooming to better see the ALT text (“data tip”)

[Hyperlink In Title: Dow by Day in 1990](#)



After linking to and opening the spreadsheet

SGPLOT_SERIES_By_Day_SpreadSheet_WithHyperLinkInTitle.xls - Microsoft Excel

File Home Insert Page Layout Formulas Data Review View Acrobat

Cut Copy Paste Format Painter Clipboard Font Alignment Number Styles Cells Editing

Normal Bad Good Neutral Calculation Check Cell

AutoSum Fill Clear Sort & Filter Find & Select

IDX

	A	B	C	D	E	F	G	H	I	J	K	L	M	N	O	P	Q	R	S	T	U	V
1		Dow by Day in 1990																				
2		Go To Graph of This Data																				
3																						
4	Obs	DATE	Dow																			
5	1	Tuesday, 2 January 1990	1054																			
6	2	Wednesday, 3 January 1990	1050																			
7	3	Thursday, 4 January 1990	1044																			
8	4	Friday, 5 January 1990	1034																			
9	5	Monday, 8 January 1990	1037																			
10	6	Tuesday, 9 January 1990	1029																			
11	7	Wednesday, 10 January 1990	1024																			
12	8	Thursday, 11 January 1990	1027																			
13	9	Friday, 12 January 1990	1002																			
14	10	Monday, 15 January 1990	996																			
15	11	Tuesday, 16 January 1990	1008																			
16	12	Wednesday, 17 January 1990	998																			
17	13	Thursday, 18 January 1990	999																			
18	14	Friday, 19 January 1990	1004																			
19	15	Monday, 22 January 1990	980																			
20	16	Tuesday, 23 January 1990	983																			
21	17	Wednesday, 24 January 1990	980																			
22	18	Thursday, 25 January 1990	967																			
23	19	Friday, 26 January 1990	963																			
24	20	Monday, 29 January 1990	956																			
25	21	Tuesday, 30 January 1990	943																			
26	22	Wednesday, 31 January 1990	960																			
27	23	Thursday, 1 February 1990	962																			
28	24	Friday, 2 February 1990	967																			
29	25	Monday, 5 February 1990	974																			
30	26	Tuesday, 6 February 1990	969																			
31	27	Wednesday, 7 February 1990	979																			
32	28	Thursday, 8 February 1990	980																			
33	29	Friday, 9 February 1990	982																			

SGPLOT_SERIES_By_Day_SpreadSheet

Ready

9:22 AM 6/23/2012

Zooming to see the link back

The screenshot shows the Microsoft Excel interface. The ribbon is set to the 'Home' tab. The 'Clipboard' group includes 'Cut', 'Copy', 'Paste', and 'Format Painter'. The 'Font' group shows 'Arial' font, size '10', and various text formatting options like bold, italic, underline, and text color. The active cell is A1, containing the text 'Dow by Day in 1990'. Below this text is a blue hyperlink that reads 'Go To Graph of This Data'. The spreadsheet below shows a table with columns 'Obs', 'DATE', and 'Dow'. The first row of data shows '1' for 'Obs', 'Tuesday, 2 January 1990' for 'DATE', and '1054' for 'Dow'.

	Obs	DATE	Dow
1	1	Tuesday, 2 January 1990	1054

Creating Web-Enabled Graph

➤ ODS GRAPHICS / SG procs / SAS/GRAPH

➤ ODS HTML

PATH="Folder" (URL=NONE)

BODY="FileName.HTML"

(TITLE="Your Web Frame Title Goes Here")

STYLE=Styles.WhatYouLike

NOGTITLE NOGFOOTNOTE;

➤ URL=NONE for portable HTML & image files

➤ NOG . . . to use LINK= in title(s) or footnote(s)

```
ods noresults;  
ods listing close;  
ods graphics on / reset=all  
  border=off  
  width=800px height=600px  
  imagename= 'GraphFileName'  
  antialiasmax=2500  
  tipmax=2500      /* increase limit on data tip count */  
  imagemap=on;    /* turn on data tips */
```

```
ods html path="Folder" (url=none)
  nogtitle
  body='HTMLfilename.html'
  (title='web frame title');
title link='folder\SpreadSheetFileName'
  '800px BY 600px SERIES Plot With Hyperlink In Title: . . .';
proc sgplot . . . ;
  . . .
run;
ods html close;
```

```
proc sgplot data=work.DowByDayIn1990;
series y=Dow x=Date /
  markers
  markerattrs=(size=7 symbol=circlefilled color=red)
  lineattrs=(thickness=2 pattern=solid);
yaxis display=(nolabel)
  values=(&Ymin_1990 &Ymax_1990);
xaxis display=(nolabel)
  grid; /* reference lines at each axis value */
format Dow 5.;
run;
```



```
ods html path="Folder" body='SpreadSheetFileName.xls';
title justify=left "<td COLSPAN=4>Dow by Day in 1990</td>"
      justify=left "<td COLSPAN=4>
      <a href='HTMLfilename.html'>
      Go To Graph of This Data
      </a>
      </td>";
proc print data=work.DowByDayIn1990;
var Date Dow;
format Dow 5. Date weekdatx.;
run;
ods html close;
ods listing;
```

When delivering a graph via html / web page

- 1. Prevent the need for scrolling
- 2. If not bar/pie chart,
ALWAYS supply **ALT** text
- 3. Provide a companion Excel spreadsheet,
linked from and back to the web page
 - optional for bar/pie chart
 - mandatory for plot

When delivering a graph via html / web page

1. Prevent the need for scrolling

- Optimize the size of the image file to fill what you expect as probable size & shape of screens used to view the web page*
- Allow for probable extra toolbars in use

*See “Optimizing Your Use of Web Page Space” in *VIEWS News* Issue 37

When delivering a graph via html / web page

2. If not bar/pie chart, **ALWAYS** supply ALT text

(also called data tip, tool tip, mouseover text, flyover text, floatover text, hover text, and ???)

Use this:

ods graphics on / . . .

```
tipmax=2500 /* increase limit on data tip count */
```

```
imagemap=on; /* turn on data tips */
```

Complex Time Series Plots

Complex Time Series Plots

- Multi-Line (1 line / year, month, day)
- Panel / Array (1 cell / year, month, day)

For **Very Long** Time Plot, see my

articles in VIEWS News Issues 54, 55

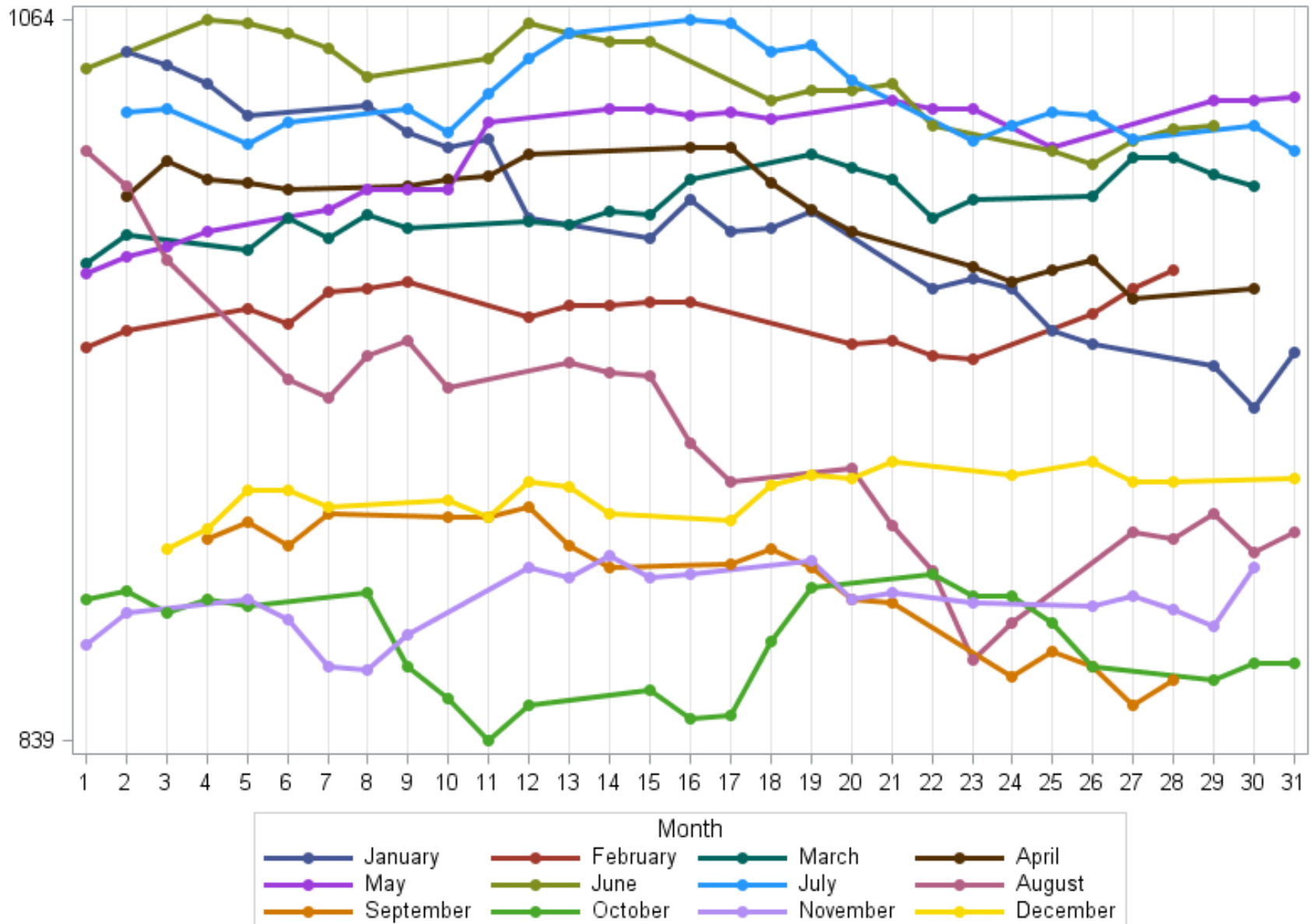
<http://www.sascommunity.org/mwiki/images/>

[7/75/VIEWS_News_Issue54.pdf](http://www.sascommunity.org/mwiki/images/7/75/VIEWS_News_Issue54.pdf)

[c/c1/VIEWS_News_Issue55.pdf](http://www.sascommunity.org/mwiki/images/c/c1/VIEWS_News_Issue55.pdf)

Overlay Monthly Plots By Day

800px BY 600px SERIES Plot: Dow by Day In 1990 With Monthly Plots Overlay



Code For Overlay Series Plot


```
ods noresults;  
ods listing close;
```

```
ods graphics on / . . . ;  
ods html . . . ;
```

SG procedure code here

```
ods html close;  
ods listing;
```

ods noresults; ods listing close;

ods graphics on / reset=all

border=off

antialiasmax=2500

tipmax=2500

width=800px height=600px /* NOT 640 X 480 */

imagemap=on

imagename=' *your image filename* ';

ods html path= " *your folder location* " (url=none)

body='your file name.html'

(title=' *text in web frame title at top left of browser* ');

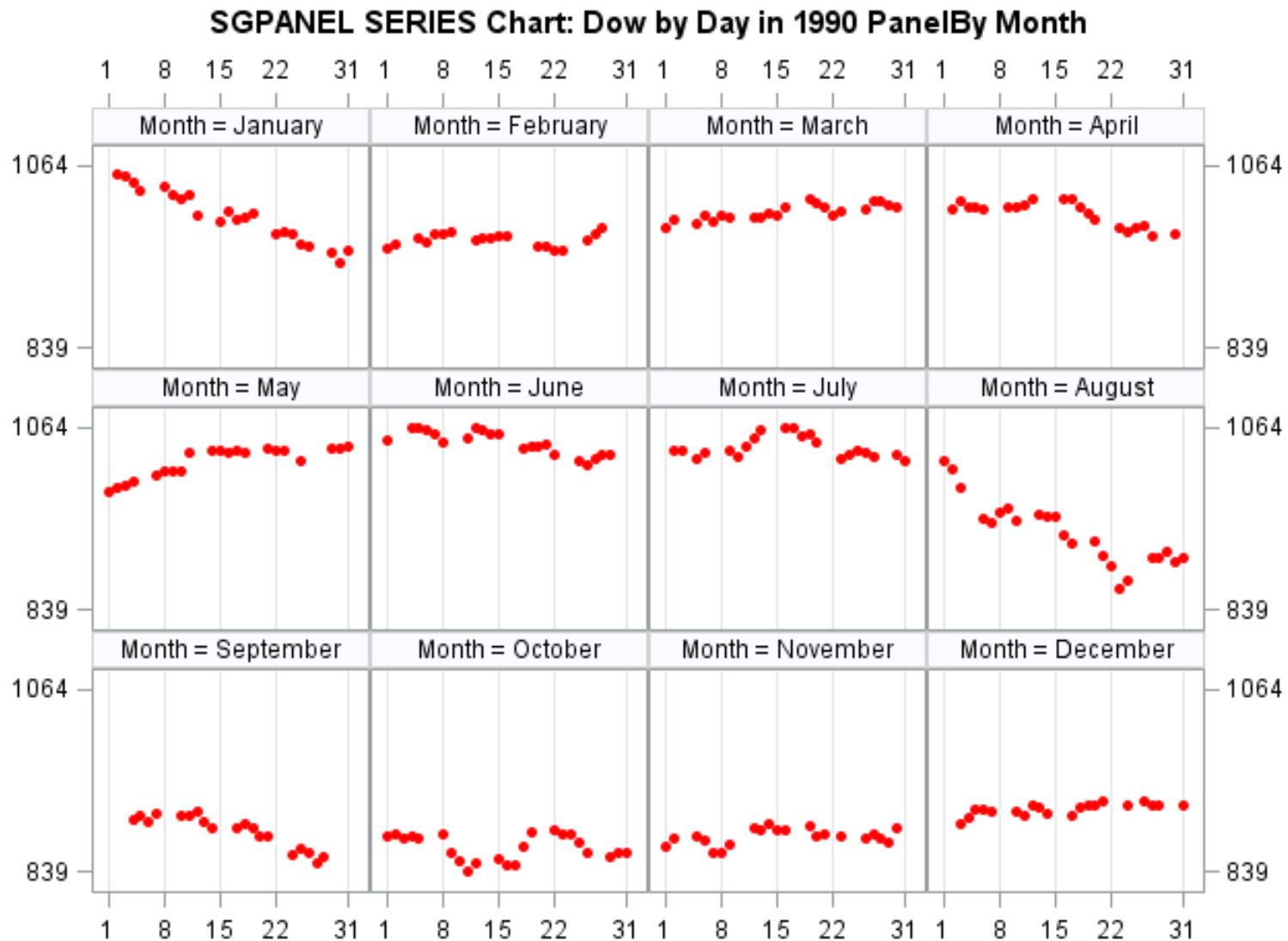
SG procedure code here

ods html close; ods listing;

```
title ' title text here ';
proc sgplot data=work.DowByDayIn1990;
  series y=Dow x=Day / group=Month /* overlay */
  markers
  markerattrs=(size=7 symbol=circlefilled)
  lineattrs=(thickness=3 pattern=solid);
yaxis display=(nolabel)
  values=(&Ymin_1990 &Ymax_1990);
xaxis display=(nolabel)
  values=(1 to 31 by 1) grid;
format Month MonthNm.;
format Dow 5. Day 2.;
run;
```

**Multiple Time Plots in Panel
Instead of Multiple Lines Overlaid**

I asked for day values 1, 8, 15, 22, 31, which **WERE** delivered by SGPANEL SERIES chart



Code For Panel Of Plots

```
ods noresults;  
ods listing close;
```

```
ods graphics on / . . . ;  
ods html . . . ;
```

SG procedure code here

```
ods html close;  
ods listing;
```

```
ods noresults; ods listing close;
```

```
ods graphics on / reset=all
```

```
border=off
```

```
antialiasmax=2500
```

```
tipmax=2500
```

```
/* accepting defaults 640px X 480px */
```

```
imagemap=on
```

```
imagenname=' your image filename ';
```

```
ods html path= " your folder location " (url=none)
```

```
body='your file name.html'
```

```
(title=' text in web frame title at top left of browser ');
```

```
SG procedure code here
```

```
ods html close; ods listing;
```



```
title ' title text here ';
proc sgpanel data=work.DowByDayIn1990;
  panelby Month / columns=4 rows=3;
  series y=Dow x=Day /
    markers
    markerattrs=(size=7
      symbol=circlefilled color=red)
    lineattrs=(color=white); /* hide the line which
                                adds no value */
  rowaxis display=(nolabel) refticks=(values)
    values=(&Ymin_1990 &Ymax_1990);
  colaxis display=(nolabel) refticks=(values)
    values=(1 8 15 22 31) grid;
format Month MonthNm. format Dow 5. Day 2.;
run;
```

```
rowaxis display=(nolabel)
  refticks=(values)
  values=(&Ymin_1990 &Ymax_1990);
colaxis display=(nolabel)
  refticks=(values)
  values=(1 8 15 22 31)
  grid;
```

/* **refticks=(values)** not available for SGPLOT
which uses yaxis and xaxis statements. For them,
option is only **refticks**, not **refticks=(values)**.
=values puts **values** on both left and right side,
or bottom and top of graph, not just tick marks. */

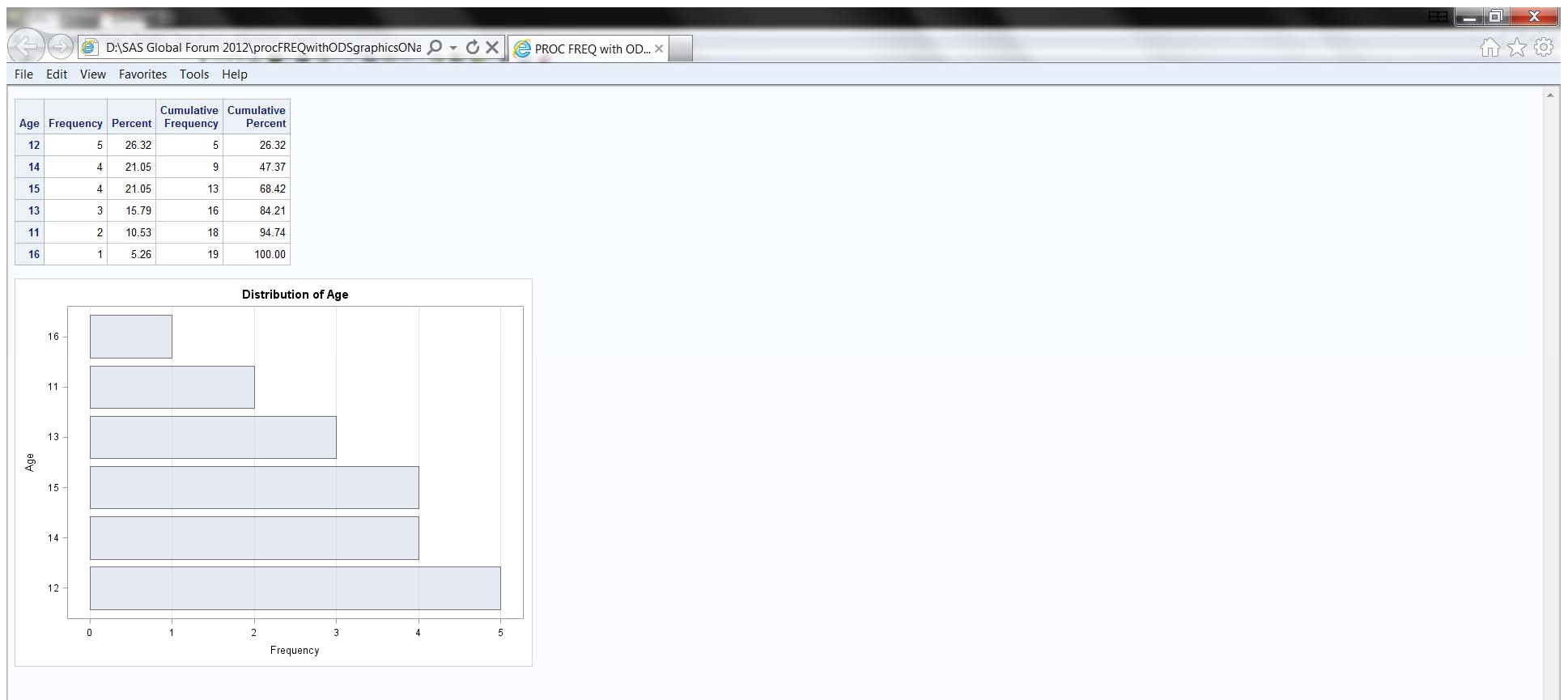
Overlaid Plots vs Array of Plots

- Overlaid Plots make discovery of seasonal or simultaneous effects easy
- Array of Plots always works in black and white*
- Array of Plots conforms to “Small Multiples” ideology
- *Good graphs get photocopied, and most workplace copiers are NOT color

Tables + Graphs in New Tech

- Easy to get a companion graph(s)
in output from Base SAS procedures
- **FREQ**
- **UNIVARIATE**
- **CORR**

```
ods graphics on;  
proc freq data=sashelp.class  
order=freq; tables Age / list  
plots=freqplot(orient=horizontal);
```



Quick & Easy for Personal Use

Not Presentation/Publication Grade

Note: Order of Bars NE Order of Table



If interested, you can find more of my work

- **Bessler on SAS, SAS/GRAPH, ODS, Color, SAS with Excel, PDF, SAS Multi-Media, etc.**
- **go to www.lexjansen.com**
- **search by author name**
- **Lex Jansen's treasure trove of links**
- **over 17,000 SAS papers (some as early as 1996) by any author for SAS Global Forum, SUGI, MWSUG, NESUG, PharmaSUG, PhUSE, PNWSUG, SCSUG, SESUG, WUSS conferences**

Thanks for coming today

**For your comments, questions,
suggestions, slide requests:**

LeRoy Bessler PhD

Bessler Consulting and Research

Mequon, Milwaukee, Wisconsin, USA

Le_Roy_Bessler@wi.rr.com

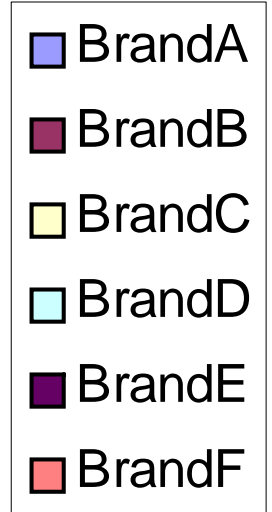
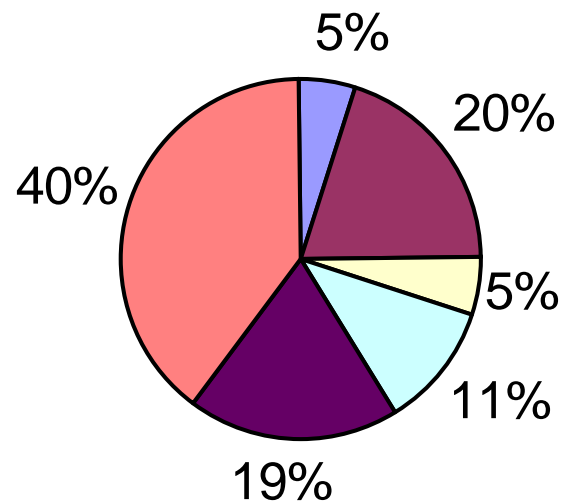
Converting Complexity To Clarity™

What **MAKES** a legend unusable?

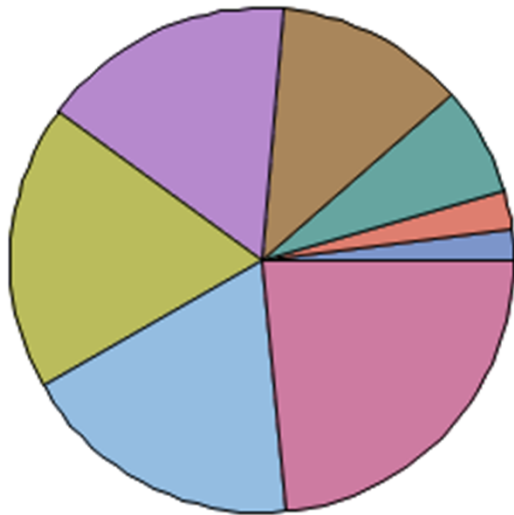
- **COULD** be unreadable text
but not the common problem
- Legend is **MEANT** to **decode** color of image elements—i.e., color used in
 - area fill (pies, bars, maps)
 - plot markers
 - plot lines

Anti-Communicative Excel Pie Chart

Figure 7: Excel Pie Chart With Legend.
Legend Color Samples Are Too Small.



Communicative-Effective Pie Chart With Legend, Made With SAS/GRAPH



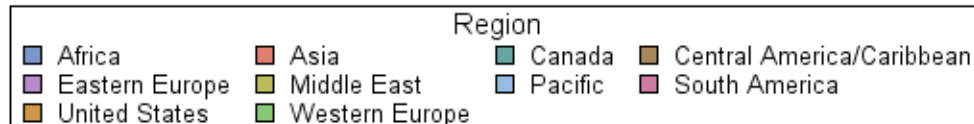
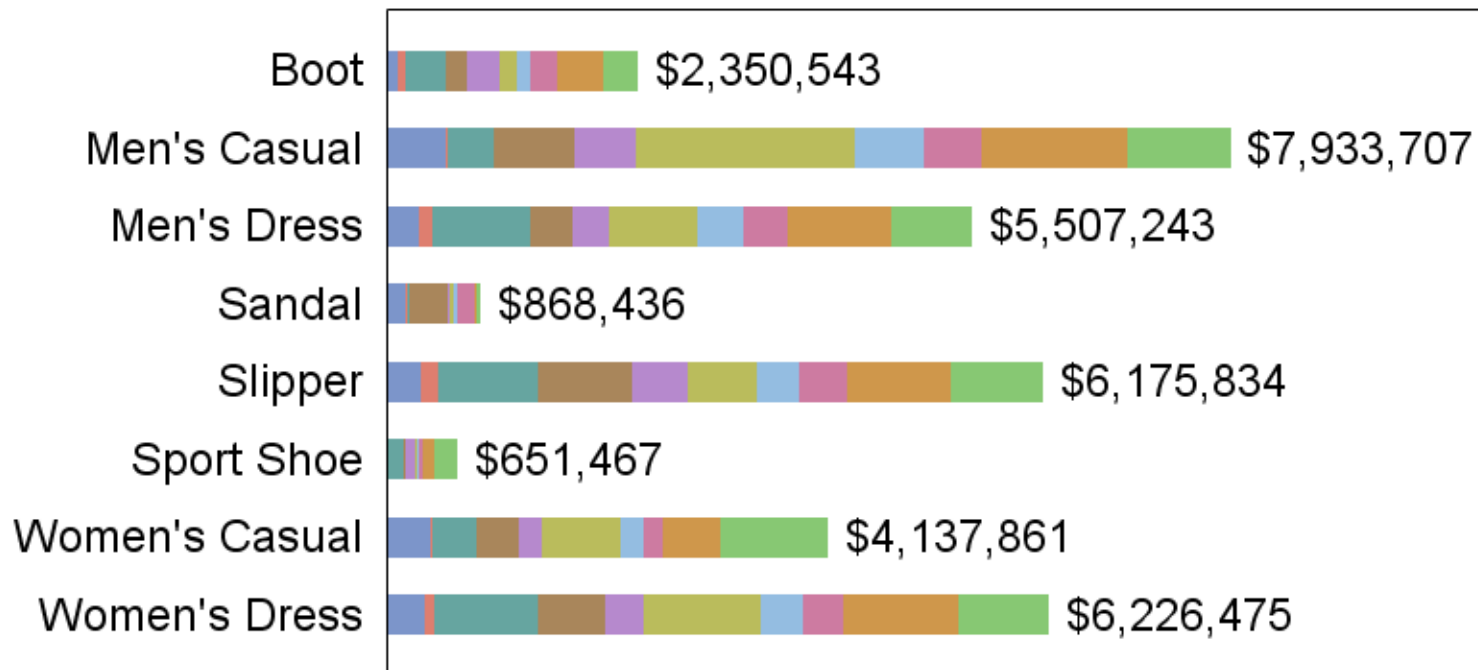
01.9%	- Sport Shoe	- \$651,467
02.6%	- Sandal	- \$868,436
06.9%	- Boot	- \$2,350,543
12.2%	- Women's Casual	- \$4,137,861
16.3%	- Men's Dress	- \$5,507,243
18.2%	- Slipper	- \$6,175,834
18.4%	- Women's Dress	- \$6,226,475
23.4%	- Men's Casual	- \$7,933,707

Anti-Communicative SGPLOT Legend Projected Image Not Representative

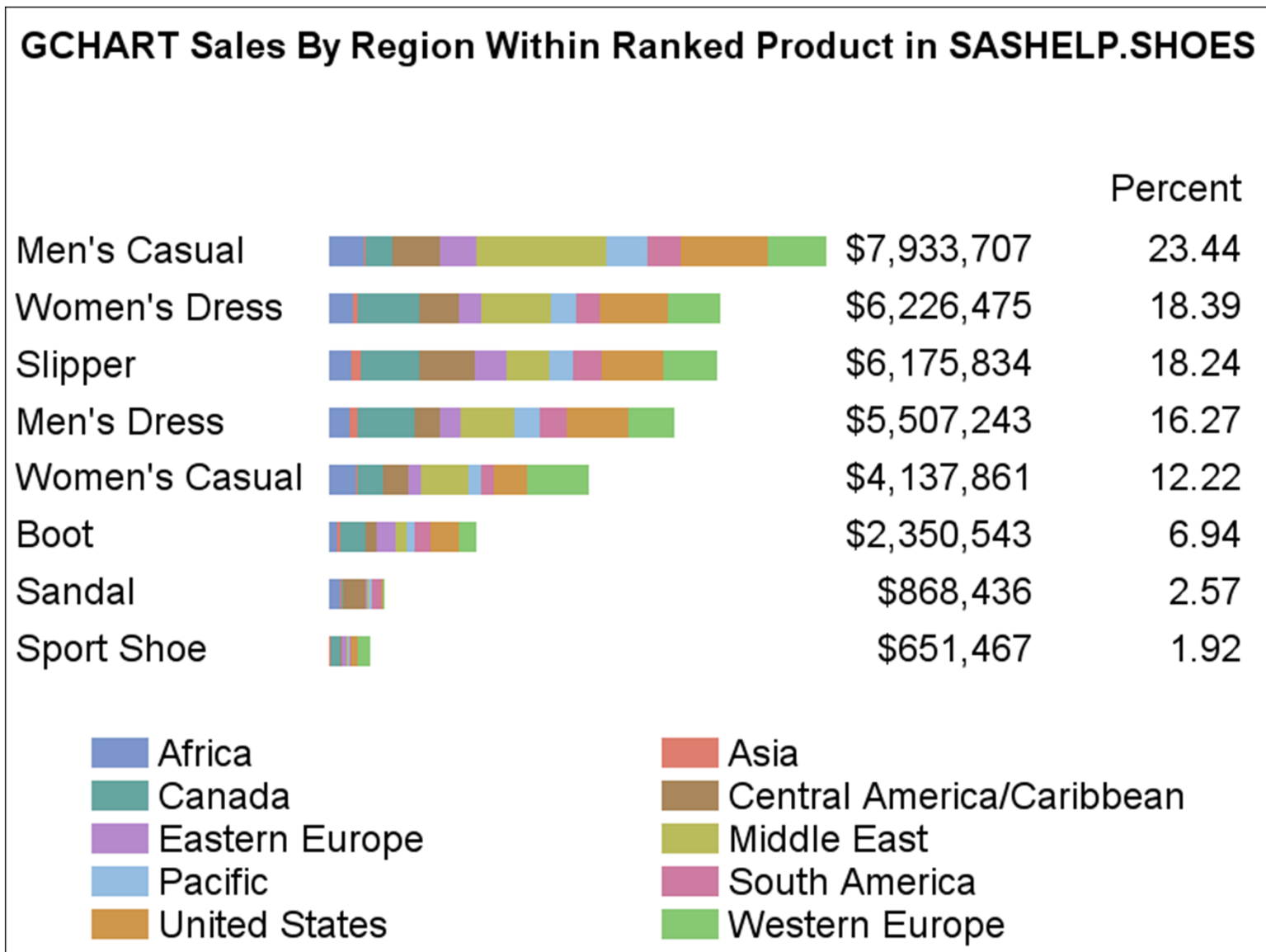
SGPLOT Sales by Region within Product in SASHELP.SHOES

No ranking is possible.

Legend color samples are too small:
MAXLEGENDAREA option is No Help, and
reducing text height and bar width is No Help.



SAS/GRAPH Legend Communicative- Effective Even Not Projected



Anti-Communicative SGPLOT Legend

Projected Image Not Representative

